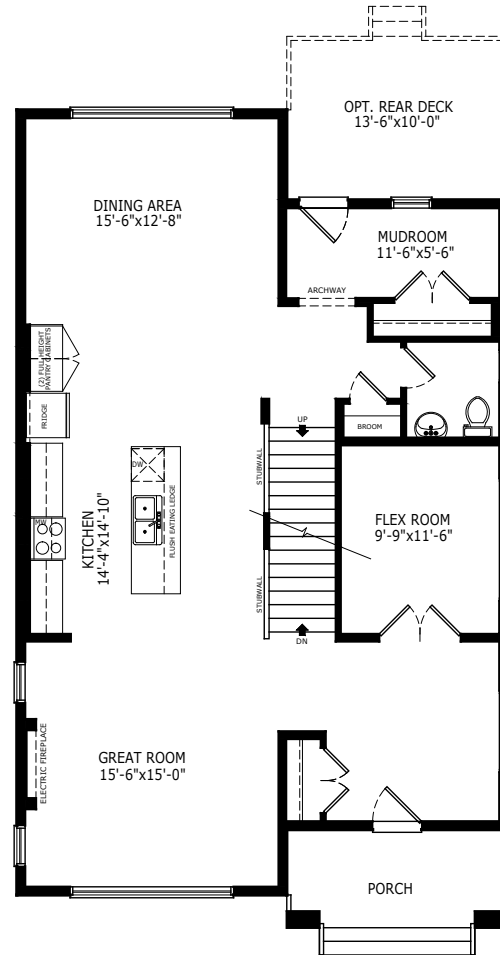
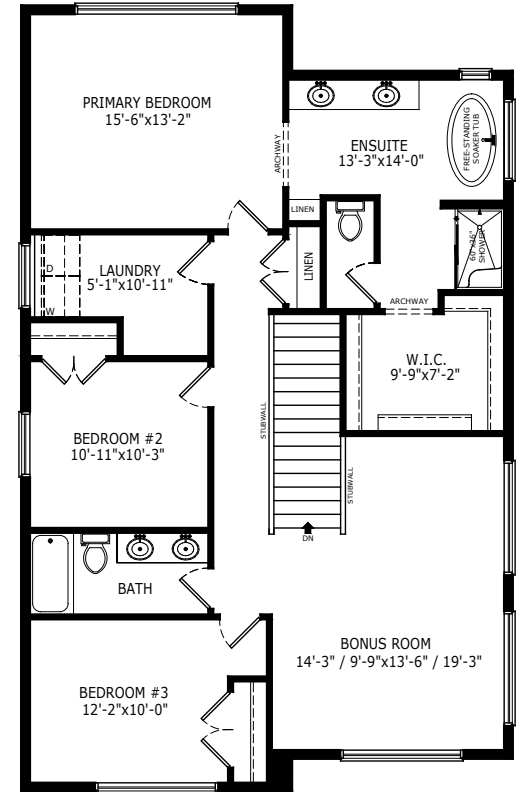


2618 SQ FT
3 BEDS
2.5 BATHS

SEYMOUR 2



MAIN: 1312 SQ FT



UPPER: 1306 SQ FT

Sterling HOMES

A QUALICO Company

ELEVATIONS



CRAFTSMAN



FARMHOUSE



MODERN



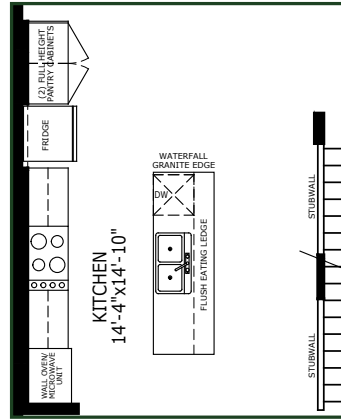
MODERN STUCCO



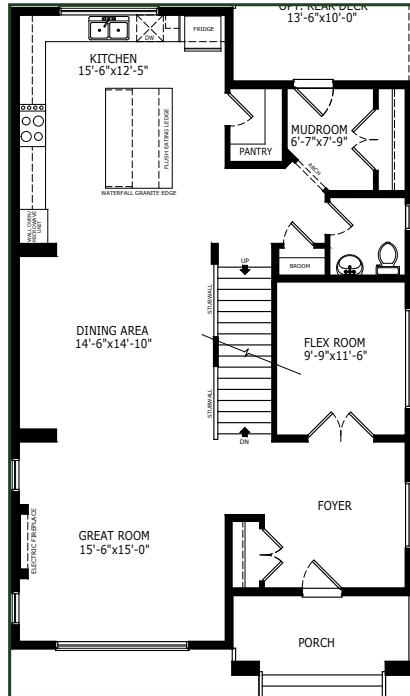
PRAIRIE

MAIN FLOOR OPTIONS

OPTIONAL EXECUTIVE KITCHEN

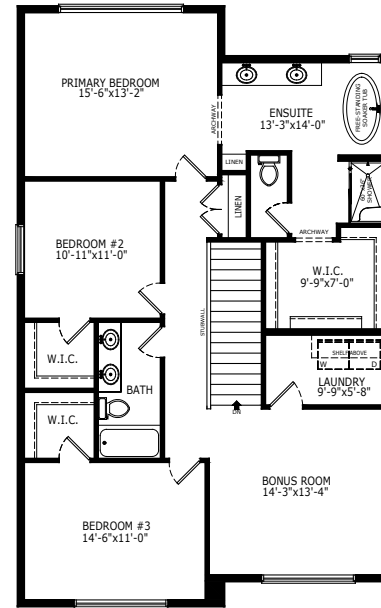


OPTIONAL KITCHEN

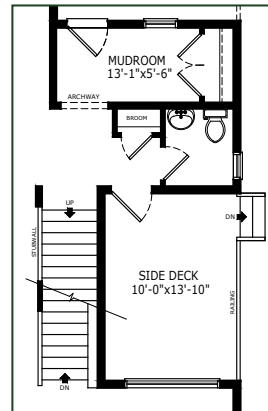


UPPER FLOOR OPTIONS

OPTIONAL UPPER FLOOR

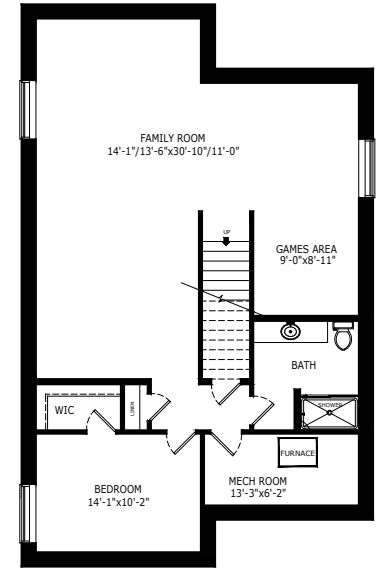


OPTIONAL SIDE DECK

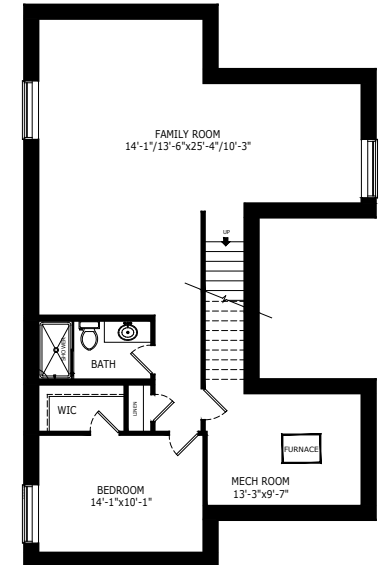


BASEMENT OPTIONS

STANDARD 1074 SQ FT



BASEMENT DEVELOPMENT FOR
OPTIONAL MAIN FLOOR LAYOUT



Scan here
for floorplan
options and
more

Build Your Life

STERLINGCALGARY.COM